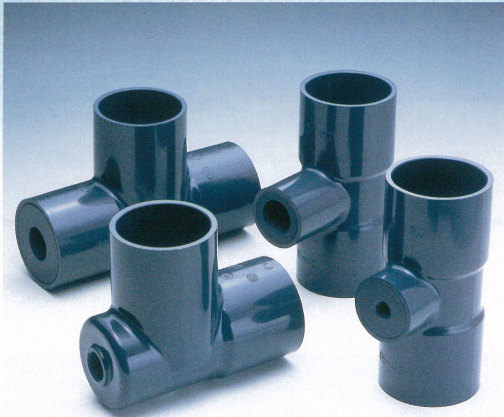


MULTI-JOINT



FEATURES

High Safety Factor By A Molding

(Multi-Joint Type "L" with Female connection 40mm - 150mm) They are produced by "Injection molding" which provides customers with complete reliability and durability.

Specifications

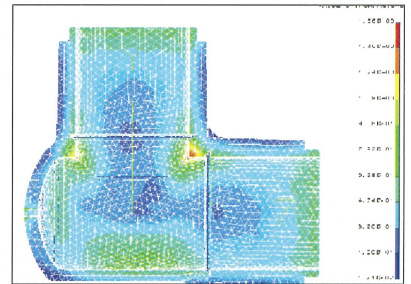
Types : Type "L", Type "T"

Sizes : 20mm - 200mm (JIS standard)

Connection: Both types are classified by female and socket connection respectively, which enable users to have multiple selections in connection with sensors, sampling valves, etc.

Designed By CAE Analysis

Multi-Joint is designed in a way to optimize many factors relating to piping stress by "CAE Hydromechanical Analysis".



High Performance

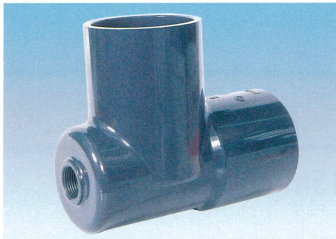
Such unique design as above gives customers not only high pressure resistance in short term but also resistance against periodic pressure change in long term.

And the Multi-Joint made by machining are all passed through tough tests in our factory and then delivered to our customers.

Chemical Resistance & High Purity

Since the material is "High Purity PVC", the "Joint" has excellent chemical resistance and extremely low leaching performance.

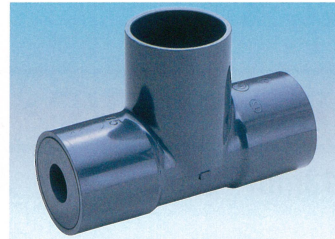
And almost all the processes are controlled in our clean room to keep their performance as perfect as possible.



THREADED TYPE L



THREADED TYPE T



SOCKET TYPE L



SOCKET TYPE T

THREADED Type L

Nominal Size (mm)	Rc				NPT			
	1/4	3/8	1/2	3/4	1/4	3/8	1/2	3/4
20 × 20	○	○	—	—	○	○	—	—
25 × 25	○	○	—	—	○	○	—	—
30 × 30	○	○	—	—	○	○	—	—
40 × 40	○	○	○	○	○	○	○	○
50 × 50	○	○	○	○	○	○	○	○
65 × 65	○	○	○	○	○	○	○	○
75 × 75	○	○	○	○	○	○	○	○
100 × 100	○	○	○	○	○	○	○	○
125 × 125	○	○	○	○	○	○	○	○
150 × 150	○	○	○	○	○	○	○	○
200 × 200	○	○	○	○	○	○	○	○

THREADED Type T

Nominal Size (mm)	Rc				NPT			
	1/4	3/8	1/2	3/4	1/4	3/8	1/2	3/4
20 × 20	○	○	—	—	○	○	—	—
25 × 25	○	○	—	—	○	○	—	—
30 × 30	○	○	—	—	○	○	—	—
40 × 40	○	○	○	○	○	○	○	○
50 × 40	○	○	○	○	○	○	○	○
65 × 40	○	○	○	○	○	○	○	○
75 × 40	○	○	○	○	○	○	○	○
100 × 75	○	○	○	○	○	○	○	○
125 × 75	○	○	○	○	○	○	○	○
150 × 75	○	○	○	○	○	○	○	○
200 × 75	○	○	○	○	○	○	○	○

SPECIFICATIONS

Body material	High purity polyvinyl chloride
End Connectors	Threaded, Socket
Nominal Size	20mm - 200mm
Working Temperature	50°C
Max. Working Pressure	1.0MPa

SOCKET Type L · T

Nominal Size (mm)	Type	16	20	25	40	50	65	75	100	125
		40	L	○	○	○				
	T	○	●	●						
50	L	○	○	○						
	T	●	●	●						
65	L	○	○	○	○					
	T	○	○	○	●					
75	L	○	○	○	○	○				
	T	○	○	●	●	●				
100	L	○	○	○	○	○	○			
	T	○	○	○	○	●	○			
125	L	○	○	○	○	○	○	○		
	T	○	○	○	○	○	○	○	○	
150	L	○	○	○	○	○	○	○	○	○
	T	○	○	○	○	○	○	●	●	
200	L	○	○	○	○	○	○	○	○	○
	T	○	○	○	○	○	○	○	●	○

※ ● This product can correspond with ASAHI AV TS RITTINGS.