

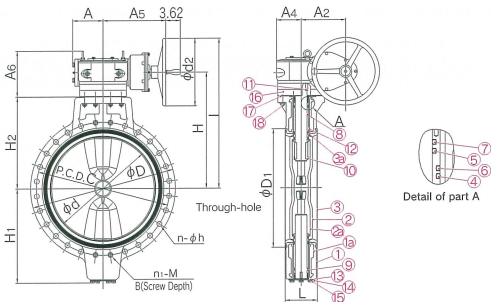
# PDCPD BUTTERFLY VALVE 700mm - 1200mm(28inch - 48inch)



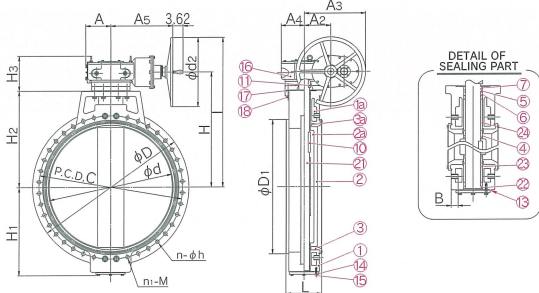
Nominal Size  
700mm - 1200mm  
(28inch - 48inch)

## DIMENSION

### ● 700mm - 1000mm(28inch - 40inch)



### ● 1100mm, 1200mm(44inch, 48inch)



## PARTS & MATERIALS

No.	DESCRIPTION	Pcs.	MATERIAL
①	BODY	1	PDCPD
②	DISC	1	PDCPD
③	SEAT	1	
④	O-RING (A)	11	EPDM
⑤	O-RING (B)	3	
⑥	O-RING (C)	1	NBR
⑦	O-RING (D)	1	NBR
⑧	STEM (A)	1	STAINLESS STEEL (SUS403)
⑨	STEM (B)	1	STAINLESS STEEL (SUS403)
⑩	KEY (A)	1	CARBON STEEL (S45C)
⑪	KEY (B)	1	CARBON STEEL (S45C)
⑫	BUSH	2	BRONZE CAST (BC6)
⑬	GASKET (A)	1	NONAS SHEET
⑭	STEM HOLDER	1	STAINLESS STEEL (SUS304)
⑮	BOLT (A)	6	STAINLESS STEEL (SUS304)
⑯	GEAR BOX	1	CASTIRON (FC200) etc.
⑰	GASKET (B)	1	NONAS SHEET
⑱	BOLT (B)	8	STAINLESS STEEL (SUS304)
㉑	STEM	1	STAINLESS STEEL (SUS304)
㉒	THRUST	1	BRONZE CAST (BC6)
㉓	BUSH (A)	1	BRONZE CAST (BC6)
㉔	BUSH (B)	1	BRONZE CAST (BC6)
㉕	INSERT METAL OF BODY	1	CAST IRON (FCD450)
㉖	INSERT METAL OF DISC	1	CAST IRON (FCD450)
㉗	INSERT METAL OF RING	2	STAINLESS STEEL (SUS304)

## FEATURES

### High Corrosion Resistance

The body and disc are made of PDCPD. And the corrosion-resistant resin, covering the whole contact surface, makes the valve highly resistant against chemical and sea water.

### Light Weight

PDCPD having 1/4 or less the specific gravity of iron, the PDCPD BUTTERFLY VALVE is significantly lighter than a metallic butterfly valve.

### Tight Seal

A seat made of a synthetic rubber, makes the valve highly water-tight.

### Excellent Flow Characteristics

Being concentric and streamlined, the disc gives small resistance to a flow, thus allowing it to be laminar. The seat is kept clean, since it is integrated with the entire internal wall of the body.

### Easy to Install

The seat is flanged, so that it needs no gasket. The PDCPD BUTTERFLY VALVE is so light that it is easy install.

### Economics

Because of its high corrosion resistance, the PDCPD BUTTERFLY VALVE remains easy to operate after prolonged periods of use and needs little maintenance. Its light weight reduces piping costs.

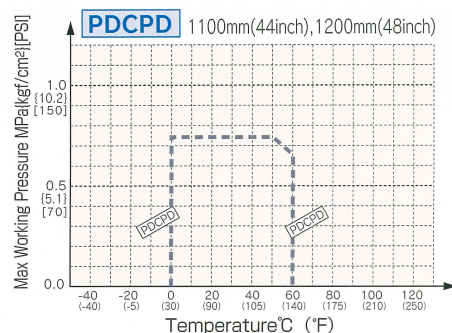
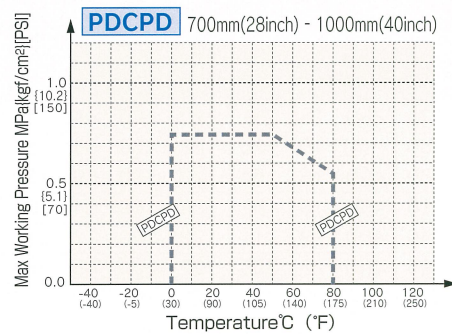
## APPLICATIONS

Irrigation facilities, water supply and sewerage systems, heat accumulators, seawater, air pipelines, etc.

## SPECIFICATIONS

Body material	Body & Disc=PDCPD. Seat=EPDMetc.
Nominal Size	700mm(28inch) - 1200mm(48inch)
Max. Working Pressure	0.75Mpa{7.7kgf/cm <sup>2</sup> }[110PSI]
Working Temperature	70 - 1000mm(28inch - 40inch) 0 - 80°C (30° F - 176° F) 1100, 1200mm(44inch - 48inch) 0 - 60°C (30° F - 140° F)

## WORKING PRESSURE VS. TEMPERATURE



LIST OF FLANGE STANDARDS

Nominal Size mm(inch)	FLANGE STANDARDS			Max. Working Pressure
	JIS 10K	ANSI Class 150	DIN PN10	MPa {kgf/cm <sup>2</sup> } [PSI]
700(28)	○	○	○	0.75 {7.7} [110]
800(32)	○	○	○	0.75 {7.7} [110]
900(36)	○	—	○	0.75 {7.7} [110]
1000(40)	○	○	○	0.75 {7.7} [110]
1100(44)	○	○	—	0.75 {7.7} [110]
1200(48)	○	○	○	0.75 {7.7} [110]

DIMENSIONS TABLE

Nominal Size		d	JIS 10K						JWWA						D	D <sub>1</sub>	D <sub>2</sub>	L	H	I	H <sub>1</sub>	H <sub>2</sub>	A	A <sub>2</sub>	A <sub>4</sub>	A <sub>5</sub>	A <sub>6</sub>	Gear box Model No.				
mm	inch		C	h	N	n	n <sub>1</sub> /side /total	M	B	C	h	N	n	n <sub>1</sub> /side /total															M	B		
700	28	670	840	33	24	20	4	8	M30	35	854	33	16	16	—	—	—	—	928	760	350	206	685	897	589	590	194	286	158	403	296	BRL-10
800	32	770	950	33	28	24	4	8	M30	35	960	33	20	16	4	8	M30	35	1034	870	350	240	715	927	619	620	194	286	158	403	296	BRL-10
900	36	870	1050	33	28	24	4	8	M30	35	1073	33	20	16	4	8	M30	35	1168	978	350	240	800	1112	704	705	194	286	158	403	296	BRL-10
1000	40	970	1160	39	28	24	4	8	M36	35	1179	33	24	20	4	8	M30	35	1262	1080	460	300	845	1157	749	750	229	242	210	565	323	BRL-20
1100	44	1080	1270	39	28	24	4	8	M36	42	1283	33	24	20	4	8	M30	35	1380	1195	460	300	942	1260	780	840	229	242	210	565	323	BRL-20
1200	48	1170	1380	39	32	28	4	8	M36	42	1387	33	28	24	4	8	M30	35	1488	1300	460	350	992	1310	850	890	229	242	210	565	323	BRL-20

Nominal Size		d	DIN PN 10						D	D <sub>1</sub>	D <sub>2</sub>	L	H	I	H <sub>1</sub>	H <sub>2</sub>	A	A <sub>2</sub>	A <sub>4</sub>	A <sub>5</sub>	A <sub>6</sub>	Gear box Model No.		
mm	inch		C	h	N	n	n <sub>1</sub> /side /total	M															B	
700	28	670	840	33	24	20	4	8	M27	35	928	760	350	206	685	897	589	590	194	286	158	403	296	BRL-10
800	32	770	950	33	28	20	4	8	M30	35	1034	870	350	240	715	927	619	620	194	286	158	403	296	BRL-10
900	36	870	1050	33	28	24	4	8	M30	35	1168	978	350	240	800	1112	704	705	194	286	158	403	296	BRL-10
1000	40	970	1160	39	28	24	4	8	M33	42	1262	1080	460	300	845	1157	749	750	229	242	210	565	323	BRL-20
1200	48	1170	1380	39	32	28	4	8	M36	42	1488	1300	460	350	992	1310	850	890	229	242	210	565	323	BRL-20

Nominal Size		d	ANSI Class 125						ANSI Class 150						D	D <sub>1</sub>	D <sub>2</sub>	L	H	I	H <sub>1</sub>	H <sub>2</sub>	A	A <sub>2</sub>	A <sub>4</sub>	A <sub>5</sub>	A <sub>6</sub>	Gear box Model No.				
mm	inch		C	h	N	n	n <sub>1</sub> /side /total	M	B	C	h	N	n	n <sub>1</sub> /side /total															M	B		
700	28	26.38	—	—	—	—	—	—	34.00	1.38	28	24	4	8	1 1/4	1.38	36.54	29.92	17.13	8.11	29.41	37.99	23.19	23.23	7.64	11.26	6.22	15.87	11.65	BRL-10		
800	32	30.31	—	—	—	—	—	—	38.50	1.62	28	24	4	8	1 1/2	1.38	41.34	34.25	17.13	9.45	30.59	39.17	24.37	24.41	7.64	11.26	6.22	15.87	11.65	BRL-10		
900	36	34.25	47.25	1.62	36	32	4	8	1 1/2	1.38	—	—	—	—	—	—	45.98	38.50	25.00	9.45	33.94	46.46	27.72	27.76	7.64	11.26	6.22	15.87	11.65	BRL-10		
1000	40	38.19	—	—	—	—	—	—	47.25	1.62	36	32	4	8	1 1/2	1.38	50.00	42.52	25.00	11.81	36.30	48.82	29.49	29.53	9.02	9.53	8.27	22.24	12.72	BRL-20		
1100	44	42.52	—	—	—	—	—	—	51.75	1.62	40	36	4	8	1 1/2	1.77	54.33	47.05	25.00	11.81	39.84	52.36	30.71	33.07	9.02	9.53	8.27	22.24	12.72	BRL-20		
1200	48	46.06	56.00	1.62	44	40	4	8	1 1/2	1.77	56.00	1.62	44	40	4	8	1 1/2	1.77	58.58	51.18	25.00	13.78	41.81	54.33	33.46	35.04	9.02	9.53	8.27	22.24	12.72	BRL-20

Nominal Size mm(inch)	700(28)	800(32)	900(36)	1000(40)	1100(44)	1200(48)
Stem Torque N·m {kgf·cm}	4,500 {45,900}	5,900 {60,200}	7,500 {76,500}	10,200 {104,000}	13,000 {132,600}	15,000 {153,000}
Hand Wheel operating force N{kgf}	339 {35}	444 {45}	565 {58}	326 {33}	415 {42}	479 {49}
Number of Handle Rotation	60	60	60	137	137	137
Gear Box Model	BRL-10	BRL-10	BRL-10	BRL-20	BRL-20	BRL-20