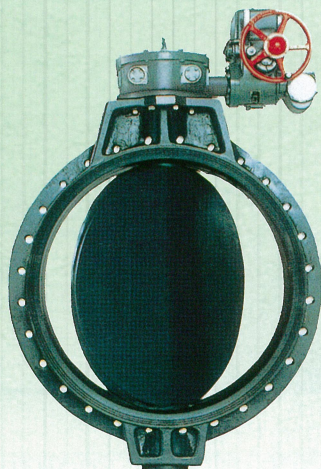


PDCPD Butterfly Valve (Electric Actuated Type S) 700mm - 1200mm(28inch - 48inch)

- Body Material**
PDCPD
- Seat & O-ring Material**
EPDM
- Connection Standard**
JIS 10K
ANSI CLASS150
DIN PN10
- Power Source**
Three-Phase
AC200V/400V
- Equipment**
Manual Operation Mechanism (with handle)
Torque Switches
Space Heater
Indicator
- Option**
Output Contact Limit Switches
Potentiometer
R/I Transmitter
E-E Positioner
※ Actuator type is to be changed



FEATURES

- As the Specific Gravity of PDCPD is less than 1/4 that of Iron the Valve Weighs Significantly lighter than Metal Butterfly Valves.
- Superior Watertightness using Seat Packing made of Synthetic Rubber.
- Standard Torque Switch protects Valves from Overload.
- Automatic Return does not require Clutch Operation after Manual Operation.
- Stopper enables Adjustment of an angle of ± 5 degree at fully-Opened or Fully-Closed position.

OPTIONAL EQUIPMENT

Combination No.	1	2	3	4
Space Heater	●	●	●	●
Output Contact Limit Switches	○	—	—	—
Potentiometer	—	○	○	○
R-I Transmitter	—	—	○	○
E-E Positioner	—	—	—	○

● Standard Equipment ※ Actuator Type is to be changed.

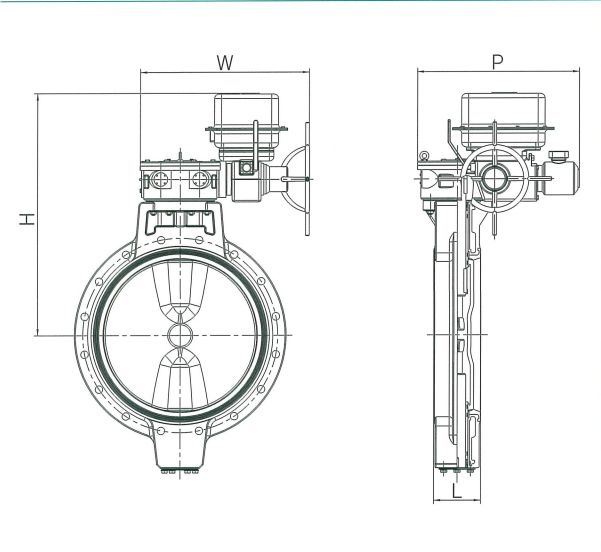
ACTUATOR SPECIFICATION

Nominal Size mm	700 (28inch)	800-900(32inch-36inch)	1000 (40inch)	1100 - 1200(44inch - 48inch)
Actuator Type	LTMD-02/BRL-10	LTMD-05/BRL-10	LTMD-1/BRL-20	LTMD-1/BRL-20
Cycle Time 50/60Hz(seconds)	74/61	71/75	46/51	59/59
Motor Output(W)	750	750	2200	2200
Motor Starting Current(A)	200V	15.6/15.2	15.6/15.2	49.0/45.0
	50/60Hz	400V	7.8/7.6	7.8/7.6
Motor Rated Current(A)	200V	4.4/4.0	4.4/4.0	11.4/10.4
	50/60Hz	400V	2.2/2.0	2.2/2.0
Number of revolutions of manual operating handle	15	333	333	618
Limit Switch Capacity	AC 250V 5A			
Protective Structure	IP55			
Cable Connector Nominal Size	Operation Circuit: 2-G1 Motor Circuit: G3/4			
Motor Pole(P)	4			
Motor Insulation	E Class			
Motor Time Rating(minute)	15min.			

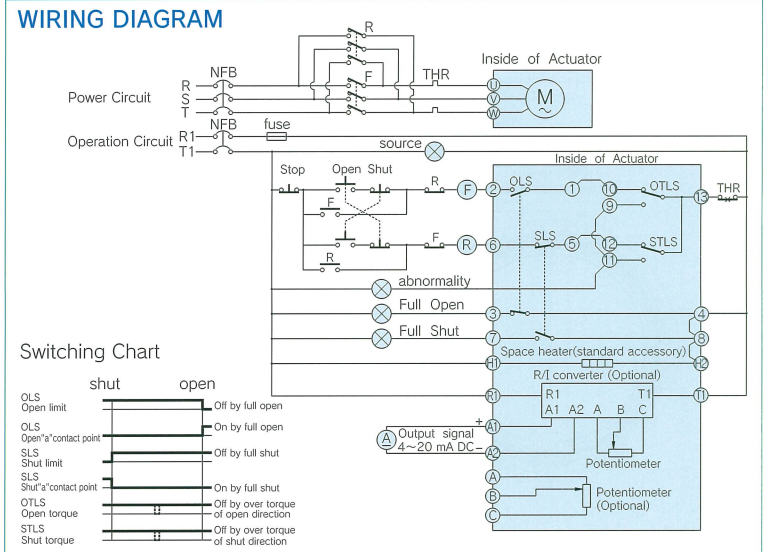
※ In the case of actuator with electric positioner, the model number is followed by "Z". Example:LTMD-02Z/BRL-10

Applications
Irrigation water, city water and sewage, thermal accumulators in buildings, various pipings such as for sea water, chemicals and air, and so on.

DIMENSIONS FIGURE



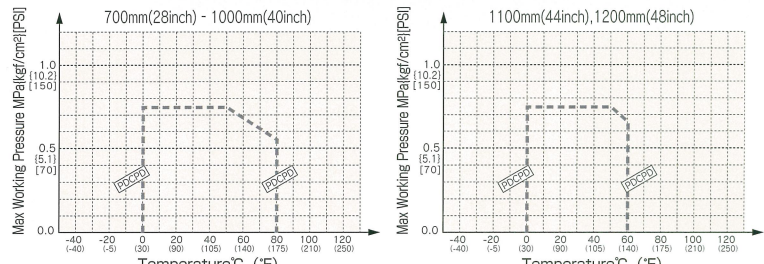
SCHEMATIC DIAGRAM



DIMENSIONS TABLE

JIS, ANSI, DIN	Unit:mm(inch)					
Nominal Size	700 (28)	800 (32)	900 (36)	1000 (40)	1100 (44)	1200 (48)
L	206 (8.11)	240 (9.45)	240 (9.45)	300 (11.81)	300 (11.81)	350 (13.78)
H	1075 (42.32)	1155 (45.47)	1240 (48.82)	1300 (51.18)	1429 (56.26)	1479 (58.23)
W	852 (33.54)	952 (37.48)	952 (37.48)	989 (38.94)	1079 (42.48)	1079 (42.48)
P	722 (28.43)	897 (35.31)	897 (35.31)	1007 (39.65)	1072 (42.20)	1072 (42.20)

WORKING PRESSURE VS. TEMPERATURE



※ 1100mm(44inch) DIN not Available.